

# You Are Invited to Join Bethany's *Fitzpatrick Society*



*By making a small monthly gift,  
you will make a big difference  
every single day!*



The Fitzpatrick Society





**Fitzpatrick Society Members  
are a special group of  
committed donors who make  
a monthly gift to Bethany.**

### **A little can go a long way.**

**Your monthly gift of: Could fund:**

\$10	A live entertainment event
\$15	A pizza party for the residents
\$20	Two months of arts & crafts supplies
\$25	Five hours of music therapy
\$35	Weekly entertainment on the Memory Care floor for a month

**You have made a tremendous difference in the lives of the  
elderly residents who call Bethany home.** Your generosity  
allows us to continue to provide the highest quality  
healthcare and to care for these women like family.

### **Why Join the Fitzpatrick Society?**

- Giving monthly is a convenient way to split your annual donation into manageable gifts, helping you plan your budget
- Your monthly support will help create a predictable funding stream so we know what resources we can anticipate throughout the year
- You will help reduce the cost of fundraising and receive fewer mailings (great for the environment too!)
- You will receive an Annual Giving Statement for tax purposes
- Your gift is automatically charged to your credit card monthly and you can stop your membership at any time
- You will feel great knowing that your small gift every month allows you to support Bethany's Mission in a big way every day

### **It's easy to join Bethany's Fitzpatrick Society!**

- Join online at [bethanyhealthcare.org/fitzpatrick](http://bethanyhealthcare.org/fitzpatrick), or
- Return the enclosed membership card to **Bethany Health Care Center – Fitzpatrick Society at 97 Bethany Road, Framingham, MA 01702**, or
- Call us at **508-271-2324**

**Set it and forget it!** Once you register with your EFT or credit card information, your gift will automatically be made monthly until you choose to end your membership.



Activities Professional and Fitzpatrick family member  
Evelyn Cotter visits with Sister Jeanne Leahy, CSJ



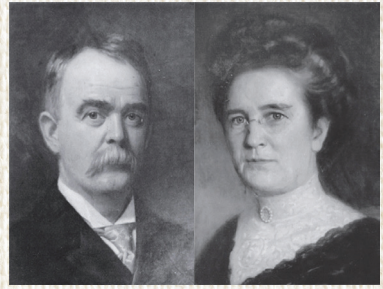
**The Fitzpatrick Society**





## Our Original Benefactors

The Fitzpatrick Society is named for Bethany's original benefactors, Thomas B. and Sara G. Fitzpatrick, who deeded their beautiful Framingham estate to the Sisters of St. Joseph in 1916 and donated funds to build a home for the Sisters to enjoy rest and relaxation. Over 100 years later the extended Fitzpatrick family continues the legacy with their generosity to Bethany.



*"My great-grandparents would be delighted by the care the Sisters receive at Bethany, and they would be humbled to know that their legacy is being celebrated in a way that contributes to the ongoing success of the organization. Because I have spent a number of years working at Bethany, I am confident that they would be so happy to see what was done with the property. And they would love that my mother – their own granddaughter – was able to reap the rewards as a resident. The family is proud to honor Thomas and Sara by continuing to support the residents and the important work of Bethany Health Care Center."*

**– EVELYN COTTER,**

Fitzpatrick Family Member and Activities Professional,  
Bethany Health Care Center



**97 Bethany Road | Framingham, MA 01702-7237 | (508) 872-6750**  
**Follow us on Facebook and Twitter @ BHCCFramingham**

*A Sponsored Ministry of the Sisters of St. Joseph of Boston*